324 NW 6th Street
324 NW 6th Street
Pompano Beach, Florida 33060

07/29/2024

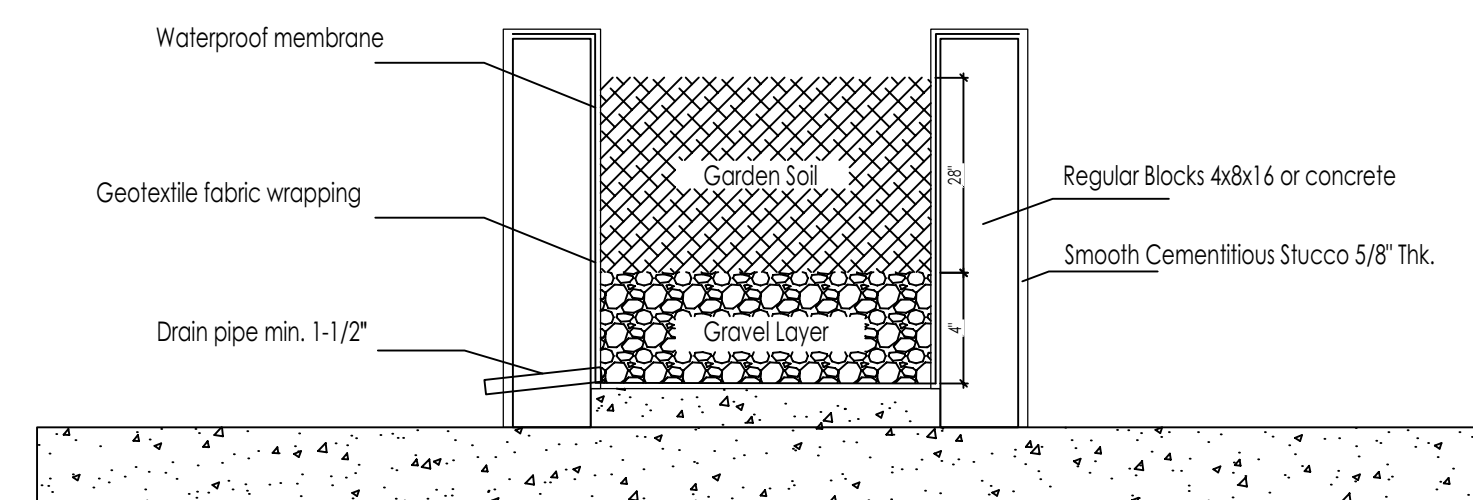
SHEET TITLE
Landscape details and notesISSUE DATE
01/04/2023REVISION
Jan 2023DESIGN
GADRAWN
TYSCALE
N/ADigitally signed by
Valeria A
Quintanilla Florida
Date: 2024.09.04
21:36:22-04'00'

SHEET NUMBER

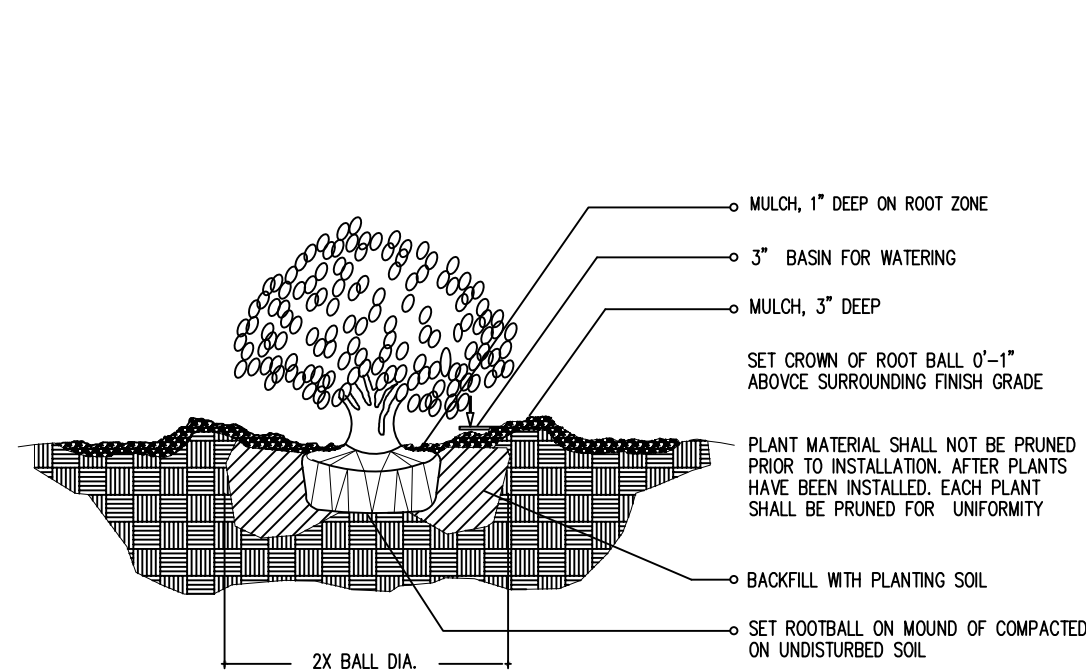
L-103

NOTES:

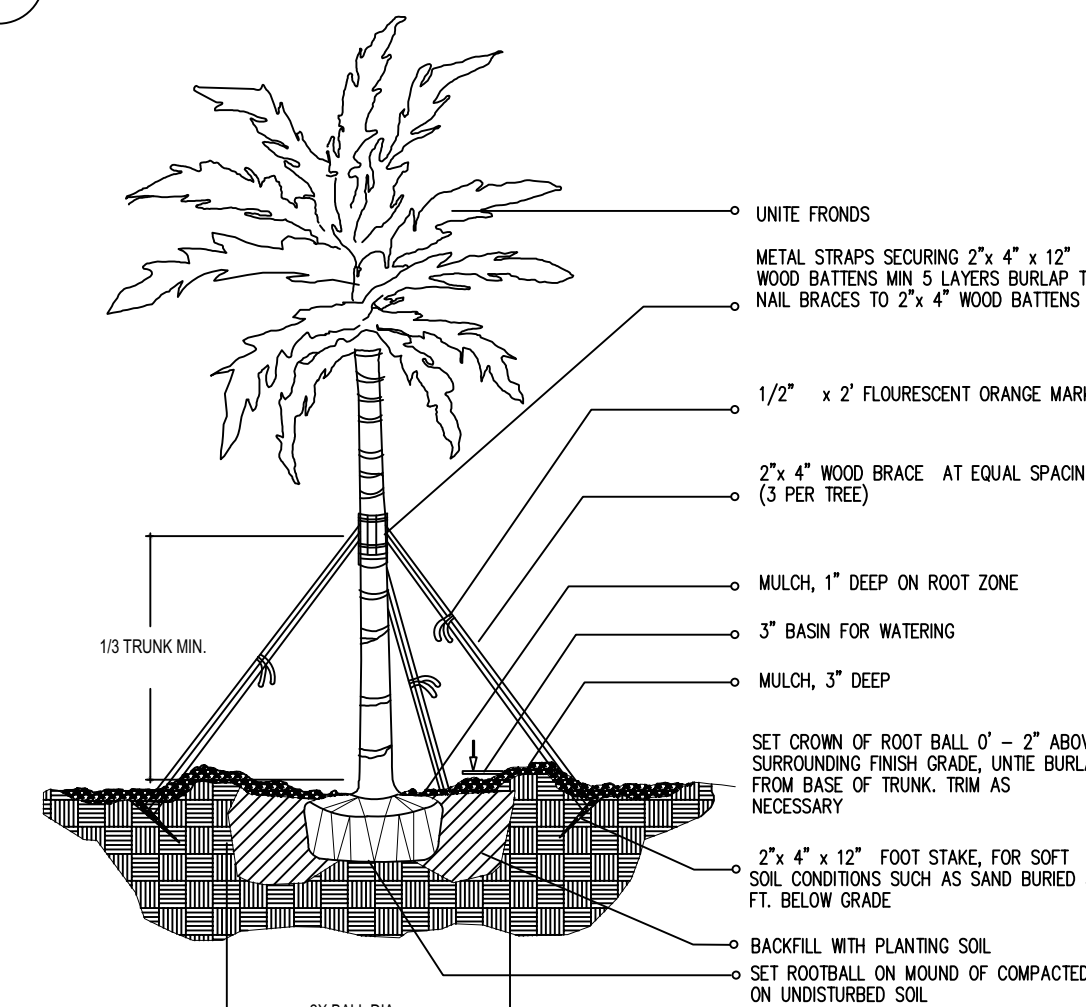
- All overhead utilities will be buried for this project as per 155.5509
- Pre Construction meeting with Urban Forestry is required before any work is performed onsite
- All road rock, concrete, asphalt and other non natural material be removed from all planting areas prior to landscape installation and be replaced with planting soil prior to landscape installation.
- All hedges abutting City Rights of way are maintained at a height no greater than 24". It is staffs recommendation that all trees VUA perimeter trees be 14' OA to create a largest CPTD clear line of sight from roadway.



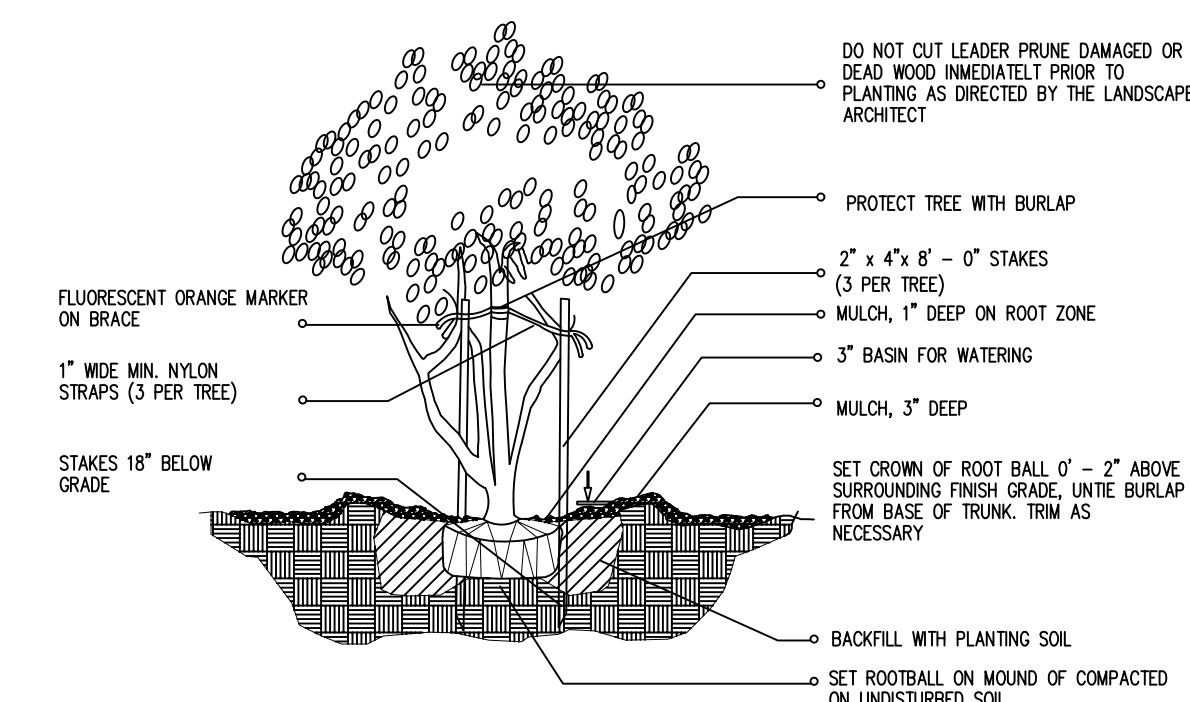
1-3 TYP. PLANTER SECTION



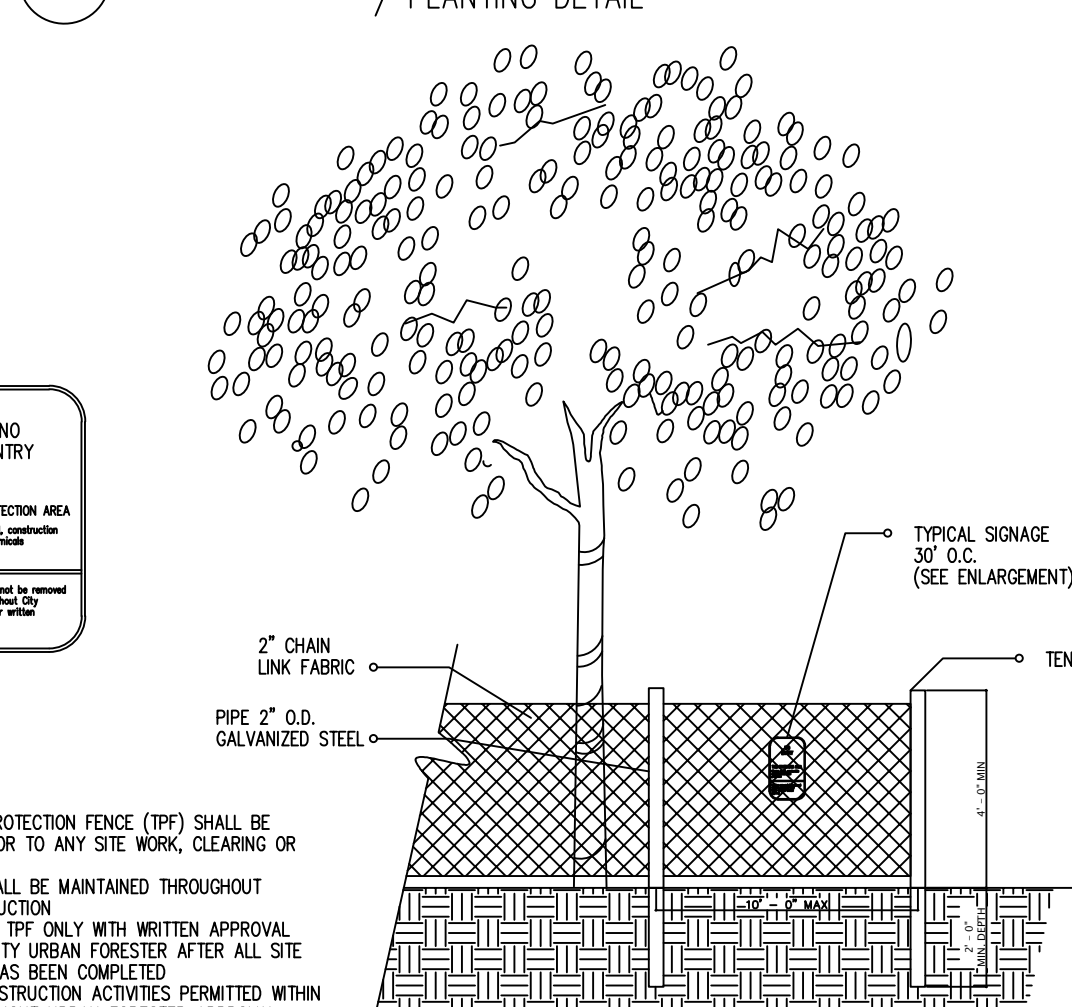
1-1 SHRUB / PLANTING DETAIL



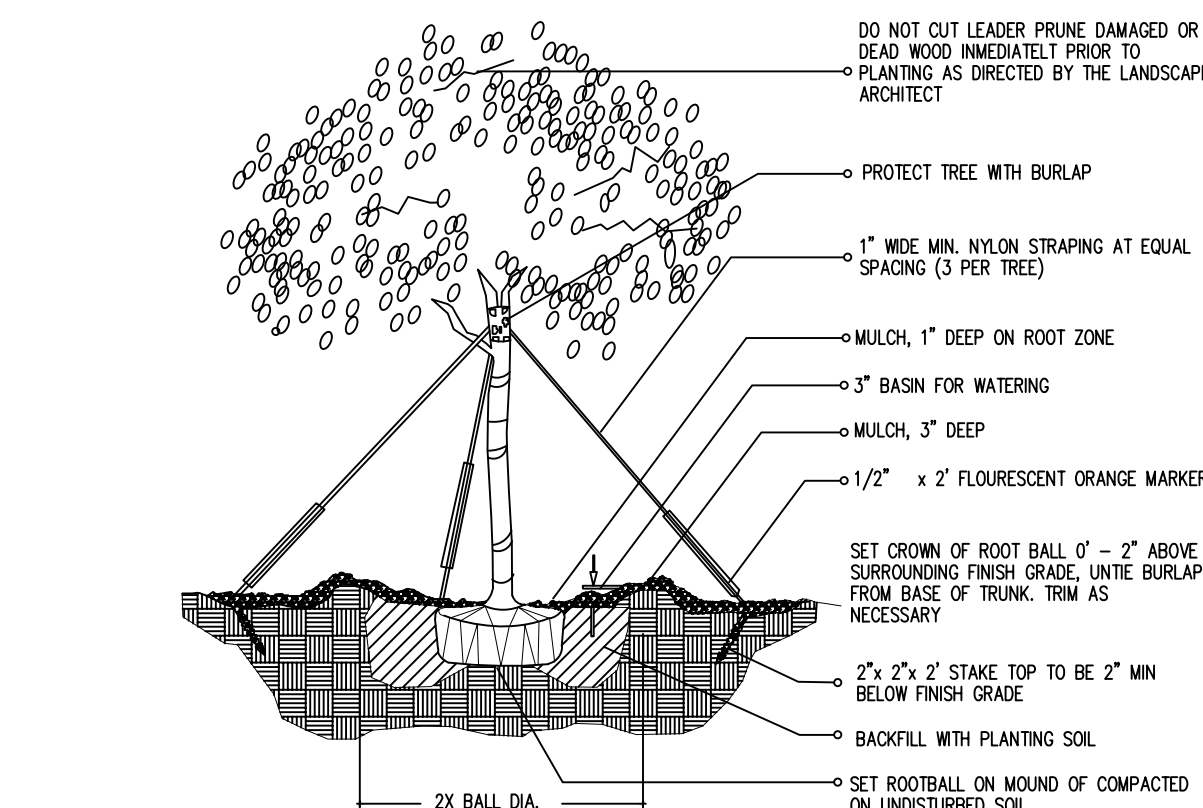
1-4 LARGE PALM / PLANTING DETAIL



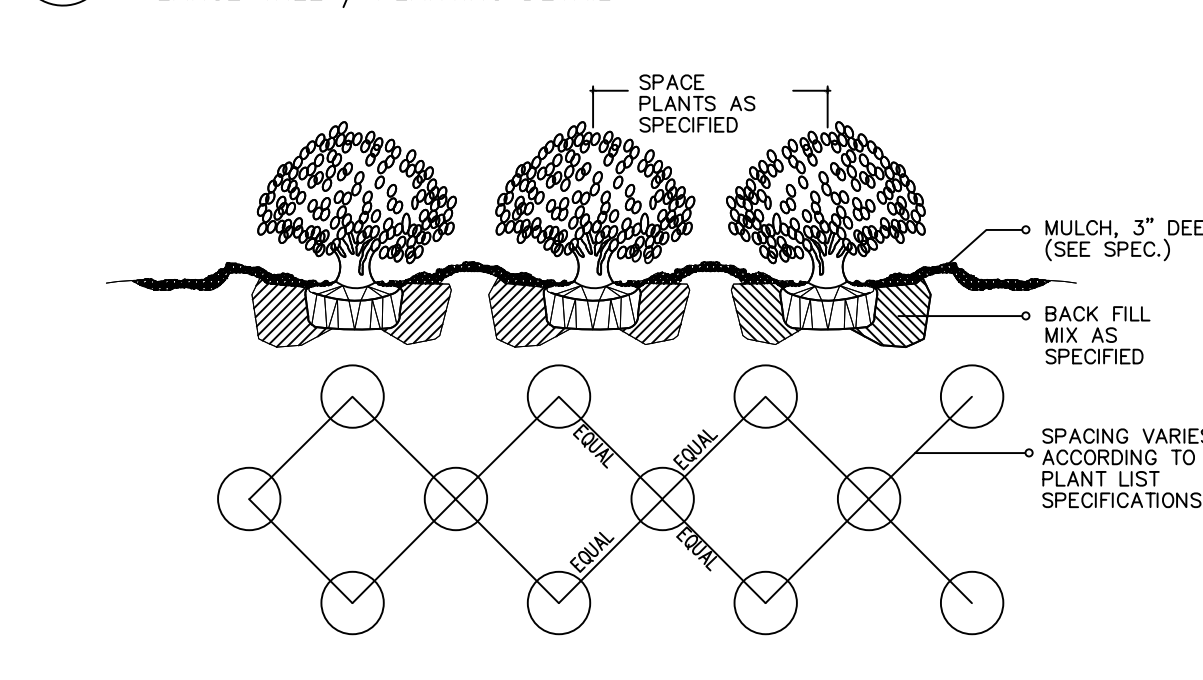
1-2 MULTI-TRUNK AND SMALL TREE (2" cal. and under) / PLANTING DETAIL



1-5 4" CHAIN LINK TREE PROTECTION FENCE BARRICADE FENCING DETAIL



1-3 (2" cal. and over) LARGE TREE / PLANTING DETAIL



1-6 SHRUB / GROUND COVER SPACING PLANTING DETAIL

LANDSCAPE LEGEND

INFORMATION REQUIRED TO BE PERMANENTLY AFFIXED TO PLANS

Transect Zone: TO Lot Area 19707 Acres 0.45

OPEN SPACE

A. Square feet of required Open Space, as indicated on site plan:
Lot Area = 19707 s.f. x 50 % = 9854 s.f.REQUIRED/ PROVIDED
ALLOWED

9854 7535

B. Square feet of parking lot open space required by Article 9, as indicated on site plan:
Number of parking spaces x 10 s.f. per parking space=

9854 7535

C. Total square feet of landscaped open space required: A+B=

LAWN AREA CALCULATION

A. Square feet of landscaped open space required:

9854 7535

B. Maximum lawn area (sod) permitted = 50 % x 7535 s.f.

3768 1850

TREES

A. Number of trees required per net lot acre, less existing number of trees
nesting minimum requirements =

7 8 (8 ex.)

B. % Palms allowed: Number of trees provided x 50% =

2 9

C. % Natives required: Number of trees provided x 50% =

2 3

D. % Drought tolerant and low maintenance:

1 3

E. Street Trees (maximum average spacing of 40' o.c.):

4 1 + 2 ex. tree

150 linear feet along street / 40 =

+ 3 ex. palms

% Palms permitted to count towards street trees on 1:1 basis x 30%:

F. Street trees located directly beneath power lines: (maximum average spacing of 25' o.c.):

linear feet along street / 25 =

SHRUBS

A. Number of shrubs required: Number of trees required x 5 =

55 338

B. % Native shrubs required: Number of shrubs provided x 50% =

169 186

C. % Drought tolerant and low maintenance provided:

68 305

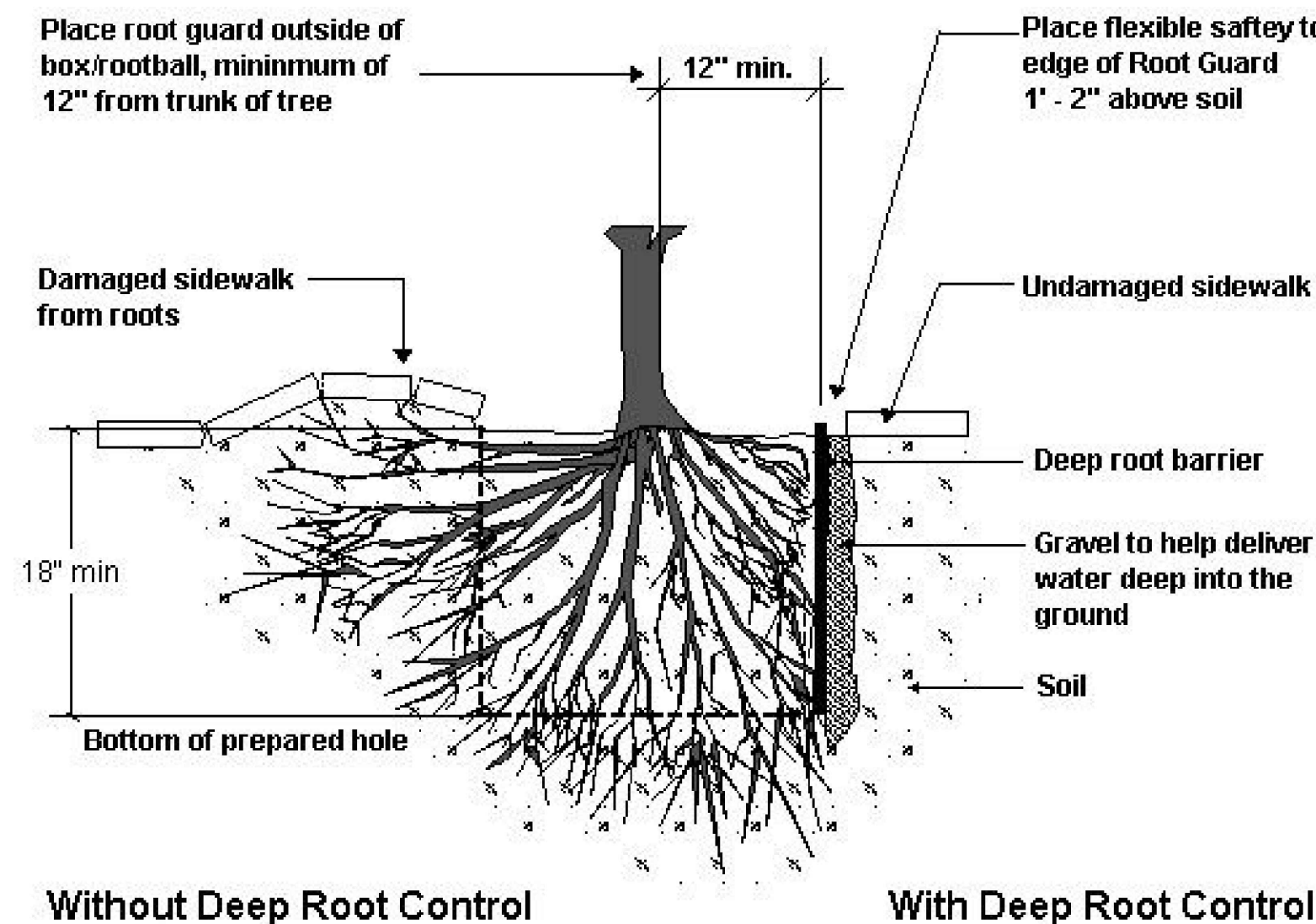
LANDSCAPE NOTES

1. Non Cypress variety mulch shall extend under all trees, shrubs and ground cover beds to the closest hard edge or sod border, in a minimum of 3" depth.
2. All plants shall meet the minimum standard of Florida No. 1 or better as specified in Grade and Standards for Nursery Plants as published by the Division of Plant Industry, Florida Department of Agriculture, latest edition.
3. All shrubs to be planted a minimum of 24", and ground covers a minimum of 12" from the edge of walks, building walls, pond's edge, etc., no-ara kora Grant and Raphiolepis indica to be planted 30" from edge of walkways.
4. All trees and palms over 8" in height shall be braced to prevent lateral movement for a period of six months from the date of planting. Either wood braces as shown in the planting detail, or the wire and turnbuckle method shall be used. No nails, screws, metal straps or wires are to be used directly against the trees or palms trunks.
5. All palms except for species such as Cocco, Acoelotrophe, Raphis, and other multitrunk palms, shall have straight trunks, free of scars, decay or any damage caused by digging, transport or planting handling of the same.
6. All work by the Landscape Contractor shall be performed in a professional and sound manner in accordance with established standards of landscape installation practices and workmanship.
7. Landscape Contractor is responsible for verifying plant quantities prior to bidding. Quantities shown in the plans may vary due to actual site scale, job conditions, etc., Landscape Architect assumes no responsibility for the actual plant count necessary for the successful completion of the work.
8. Landscape Contractor and his subcontractors shall be licensed and insured as required by the municipality, county, state or any other governmental agency requiring a license or insurance in order for the Landscape Contractor to perform his work.
9. All work shall conform to Miami-Dade County's landscape ordinance Chapter 18-A, ordinance 98-13, and any other municipal landscape ordinance in effect at the projects location, including streets-trees.
10. Landscape Contractor is required to procure and obtain any necessary permits applicable for the successful completion of this project, if applicable.
11. Landscape materials shall not be allowed to grow in such a manner as to impede streetfront triangle of visibility to property owner or neighbors, so as to materially impede vision between a height of 3 feet and 8 feet.
12. Landscape Contractor shall call Sunshine State One Call Center of Florida at 1-800-432-4770 (Toll Free) 48 hours before digging.
13. Landscape Contractor is responsible for inspecting the site and physically observing all the site conditions prior to entering into Agreements or Contract with Owner. Landscape Contractor shall coordinate his work with the General Contractor of Construction Manager in such a manner as to allowed for a speedy and orderly completion of all work on the site.
14. Any excess soil, landscape materials and debris from the landscape Contractor's work shall be removed from the site immediately upon completion of his work.
15. Landscape Contractor shall coordinate the proposed planting in the Planting Plan with the work required in relocating and removal of trees in sheet L-1 (Existing Trees).
16. One year warranty.

TREES & PLANTING TO BE PRESERVED NOTES

TREE AND PALM TRANSPLANTING NOTES:

1. Certified arborist is to be hired to supervise and direct all phases of transplanting trees and palms.
2. Trees to be relocated shall be root pruned a minimum of eight weeks prior to transplanting. Landscape Contractor shall maintain transplanted materials during construction period by watering, moving, grading, fertilizing and pruning.
3. Landscape Contractor is responsible for verifying locations of all underground and overhead utilities and easements prior to commencing work. All utility companies and/or the General Contractor shall be notified to verify locations prior to digging. Utility trenching is to be coordinated with the Landscape prior to beginning of project. The Owner and Landscape Architect shall not be responsible for damage to utility or irrigation lines.
4. The Landscape Contractor shall comply with all local and State codes and shall be responsible for obtaining all applicable permits.
5. The Landscape Contractor shall regularly inspect the relocated materials to ensure compliance with standard horticultural practices.
6. The Landscape Contractor is responsible for guaranteeing the transplanted trees and palms for a period of one year. At the time of the final inspection all transplanted trees and palms that are not healthy growing condition shall be replaced by the Landscape Contractor.
7. Root Pruning and Transplanting Operations: The Landscape Contractor shall take all precautions to minimize shock of root pruning and transplanting in accordance with standard arboriculture procedures including:
 - A. The diameter of the root-pruning or transplanting circle shall be at a distance away from the trunk equal to 12 times each inch of trunk diameter at breast height.
 - B. All small roots shall be cleanly cut with a sharp spade, a clean saw or chainsaw depending on the size of the root.
 - C. Trees shall not be pruned at transplanting to compensate for root loss. Any limbing required shall be as per the International Society of Arboriculture Trimming Standards.
 - D. For all palms except Sabal palmetto, the lower fronds shall be pruned leaving 9-11 fronds that can be tied without an extensive amount of weight that may damage the heart of the palm. The Sabal palmetto shall have all fronds cut without damaging the bud.
 - E. After root pruning trees, backfill roots to original existing grade with existing soil free of any deleterious material to root growth.
 - F. Provide a minimum of 3" mulch over backfill area to prevent weed growth, conserve moisture and prevent evaporation. Keep mulch 6" away from the trunk.
 - G. Provide free protection as per Tree Protection Detail to ensure that the tree or root system is not damaged during the root-pruning period.
 - H. After root pruning, during root regeneration period trees shall be watered as per standard horticultural practices.
 - I. Immediately prior to transplanting tie the branches of the tree up to avoid damage.
 - J. The root ball shall be wrapped with burlap to protect the soil around the roots and protect the roots from drying out at time of moving from the hole.
 - K. Finish cutting of root ball for transplanting.
 - L. Transplanting must occur within 24 hours after being dug for relocation. Trees/Palms should be kept in shade and the canopy kept moist.
 - M. Digging and preparation of the new hole for the transplant shall be done prior to removing the tree from the existing location.
 - N. The depth of the new hole shall be minimum equal to the depth of the root ball and the width shall be minimum equal to three times the width of the root ball. The Landscape Contractor is to verify that all new holes have appropriate percolation. Landscape Contractor is to report to the Landscape Architect if water percolation does not meet requirements for healthy plant growth.
 - O. Trees and palms shall be lifted from the ground with heavy equipment designed specifically for tree relocation so that the trunk and crown is not impacted and damaged by the equipment.
 - P. The slings used to lift the trees and heavy weight palms shall be non-binding nylon type slings that are wrapped around the root ball to support the weight of the palm. Padding the sling may be necessary so that the trunk or "backs" are not damaged.
 - Q. Trees should be planted 2" max higher than their original planting level prior to relocation. Palms shall be planted at the same elevation prior to relocation. The tree and palm shall be centrally positioned in the planting hole and set straight, plumb or normal to the growth pattern prior to transplanting.
 - S. The trees and palms shall be backfilled with existing soil free of deleterious material to plant growth.
 - T. Trees and palms shall be deep root watered to eliminate air pockets in the backfill mix prior to mulching.
 - U. A 6" saucer shall be created around the edge of the plant pit to help hold water, see planting detail for additional information.
 - V. Provide a minimum of 3" layer of mulch over saucer and backfill area outside saucer to prevent the weed growth, conserve moisture, and prevent evaporation. Keep mulch 6" away from the trunk.
 - W. Install tree and palm bracing as per attached details, to ensure stability of tree and palm during time period to and after transplanting, stake trees and palms after transplanting only is required to keep them stable.
 - X. Over the guarantee period the Landscape Contractor is responsible for reseeding any trees/palms that are not vertical when caused by winds less than 75 MPH.
 - Y. After transplanting trees and palms, the Landscape Contractor shall be responsible for obtaining water and watering to maintain soil moisture during the guarantee period of a minimum of:
First month - Daily, Second month - 3 times per week, Third and Fourth month - 2 times per week, Last Eight months - 1 time per week. For trees over 4" in caliper at the time of planting, the schedule should be: First 6 weeks - Daily, from 1.5 months to 6 months 3 times per week, last 6 months - 1 time per week.



Without Deep Root Control

With Deep Root Control